



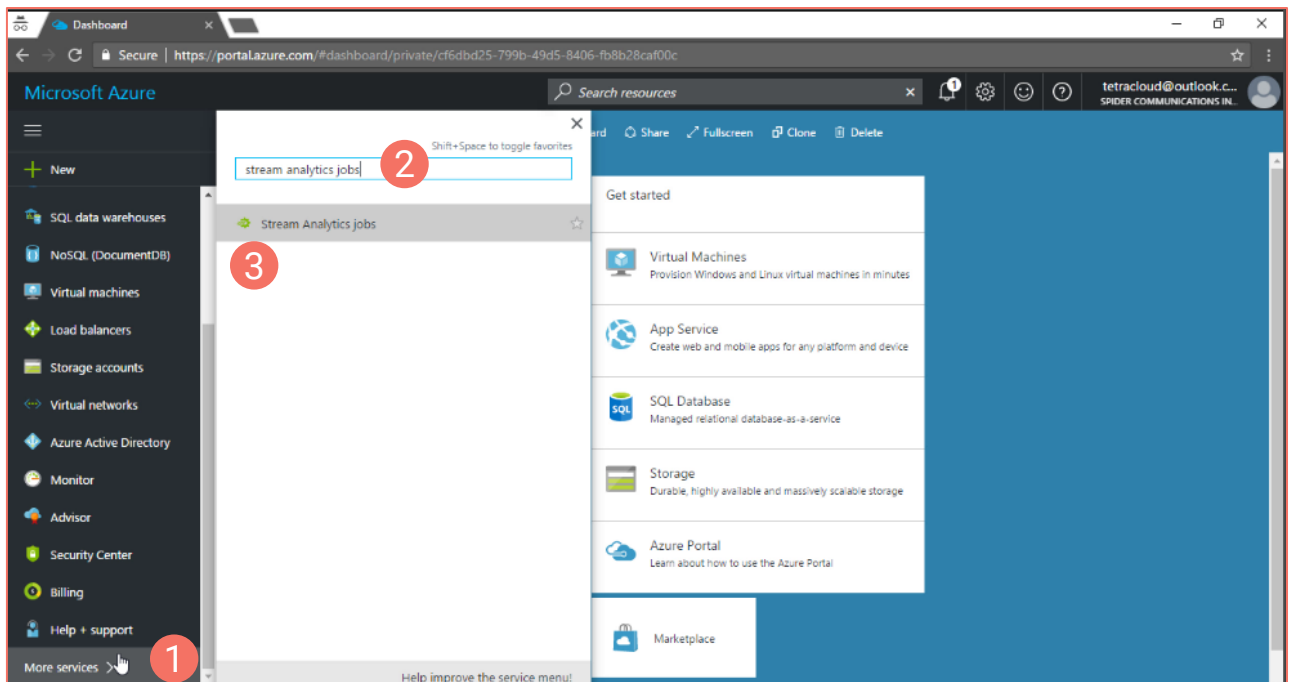
Azure Stream Analytics

When working with Azure Streaming Analytics for the first time, it's important that you get the grasp of two key functions you will frequently use:

- Saving options as favorite in the left panel for quick access
- Creating a basic Stream Analytics job

Follow the tips in this job aid as you complete these actions in the system.

Pinning Stream Analytics Job to your Dashboard



1. Click **More Services**.
2. Search for **Stream Analytics Jobs**.
3. Click the **Star** icon.

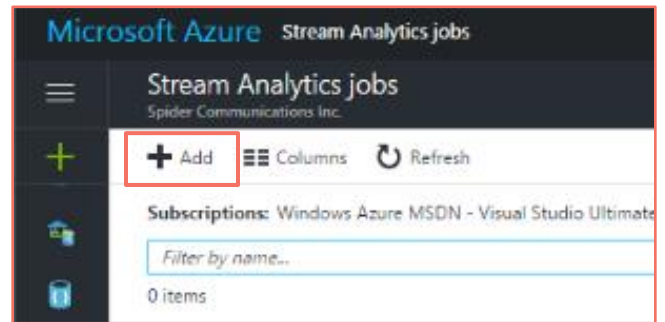




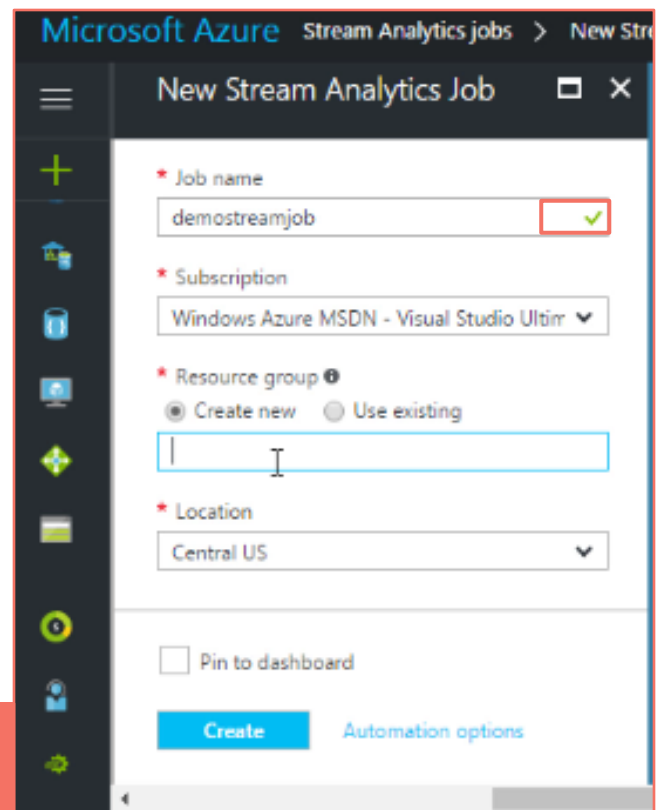
Azure Stream Analytics

Creating a Stream Analytics Job

1. In the Stream Analytics Jobs window, click **Add**.



2. Complete the information required in the configuration window (also called **Blade**) and then click **Create**.



Green checkmarks appear when you properly complete a field.

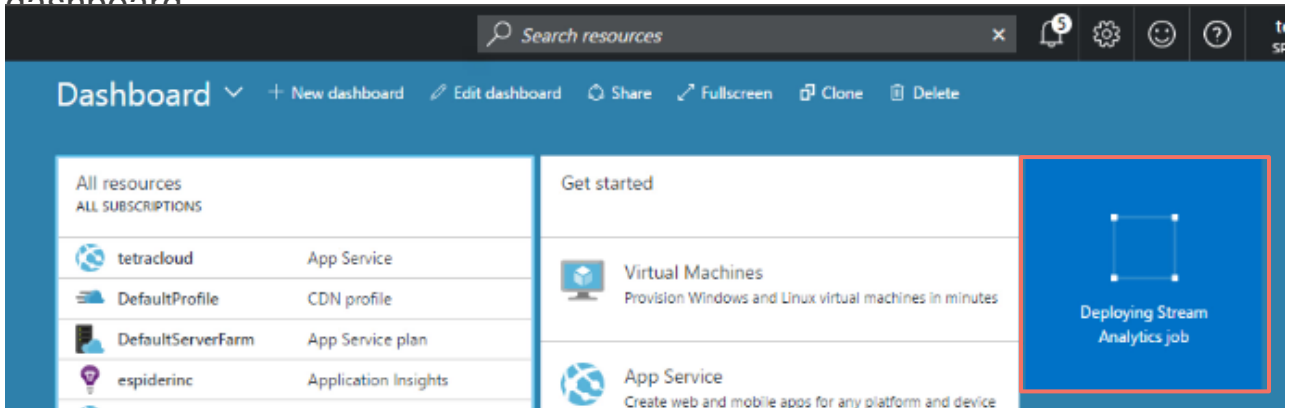




Azure Stream Analytics

Creating a Stream Analytics Job

3. Wait a few moments until the Stream Analytics Job deploys in the dashboard



4. Your Stream Analytics Job is ready to use.

